

Choice Advisory Service
Queensberry Centre, Queensberry Road
Normacot, Stoke-on-Trent
ST3 1QZ
Tel: 01782 234867
E-mail: info@choice-adviser-stoke.co.uk
www.choice-adviser-stoke.co.uk



STOKE-ON-TRENT
CHOICE ADVISER

Spring Issue 2011

Well National Offer day has arrived and the anxious wait is over for the parents of Stoke-on-Trent. This admission will be the first admission round after the commencement of the re-organisation of the cities schools, through the BSF funding.

Parents will find out about what school has been allocated to their son or daughter via e-mail if they applied online, which will be confirmed by post. If the parent has applied by any other method, they will receive a letter shortly after the 1st March, 2011 to confirm which secondary School has been allocated to their child .

We hope that you receive the good news that your child has been allocated one of the schools that was on your preference list. If you were unable to be allocated one of these schools, the Local Authority will allocate you a place at the nearest school to your home address, that has places left.

If your child has not received the school that you wanted, then you can appeal against the decision. The Choice

National Offer Day 1st March 2011

Advisory Service can help you through this process, and give guidance about what to do next.

Alternatively you can ask the Authority if there are any other places available in other schools in the city which you may want to consider.

Also you can request to go on a waiting list for a particular school, just in case a place becomes vacant.

If you need to seek further advice then don't hesitate to contact the Choice Advisory service. (Contact details above)

Best Wishes

Heather Weston

Stoke-on-Trent Choice Advisor

Inside this issue:

Page 2

What the Young People think....

Page 3

Transition

Page 4

Top tips for parents

Good News!

The Choice Advisory Service would like to thank all the parents that showed support to the Service, after it was announced that it was at risk. Since then the Service has received the good news that it has received further funding and will be staying until July 2011! We will then have to wait for the new Admissions Code to see if the service will remain after that date.

Building Schools for the Future

There will be new developments under the 'Building Schools for the Future' initiative in Stoke-on-Trent. Some of these developments have already started within the area.

You may have noticed that some schools have changed to Academies, or Foundation/Trust schools.

If you would like an update on what schools are affected and what is planned please visit the Stoke on Trent City Council website (www.stoke.gov.uk) and search for 'Building Schools for the future.' This will inform you about how the initiative is affecting each school within the city.

The Choice Advisory Service would like to say a huge 'thankyou' to Mill Hill Primary for letting me visit the children and get their opinions about Secondary School. The children were very welcoming and forthcoming about what they think the future will hold at their next school!

What do the children think High School will be like?

It will have nice dinners.

We will have good lessons.

It's a lot bigger-I will get lost in High School.

I think it will be scary.

The work will be harder.

I think High School will be boring.

You will get a lot of detentions!

No trainers are allowed!

We will do a lot of Work but will have fun in Golden time on a Friday

Magnificent.

Mint.

We will do a lot of PE.

Very Strict.

I am going to have the greatest time of my life.

What do you young people feel about moving to High School?

Here is what they felt about moving to High School:

Lonely

shy

Sick

Bored

Scared

Happy

Worried

Petrified

Cool

Excited

Awesome :-)

Great

Ace

Mint

Excervous (excited and nervous!)

Transition to Secondary School

Once your school has been allocated for your child, you may be wondering what happens next, during the next few months.

Your child will be involved in transition days, where they will visit their new Secondary School, and take part in an occasional lesson. These visits usually take place after the Easter break, but this may vary according to which school your child attends. This will give your child an insight to what to expect when they transition to High School.

What can the transition involve?

Many things are clarified during these transition days at Secondary School e.g:

- Getting to know the particular staff members.
- Having a tour of the school, so that they are more familiar to the layout.
- Introductions to the schools expectations and rules.
- What items/uniform they will need in September.
- Introductions to other children from different schools.

Who sorts out the transition?

The transition planning will take place between the staff at your current school, and the Secondary School.

If your child has a SEN statement, ensure you speak to your SENCO about the transition into Secondary School. They will ensure the new school has all the relevant information to ensure your son/daughter's transition goes well. This will be individual according to your child's needs. Speak to the SENCO/New SENCO about your concerns to make sure they are addressed, and your questions are answered. The transition into Secondary School can be very daunting for your child, but will prepare them for September.

If you are a professional and would like to know more about the Choice Advisory Service and the support we offer please contact Heather Weston on 01782 234867. Heather would be more than happy to come along and chat to your team about the Service! Please pass on my details to parents / carers who may need support in choosing a school

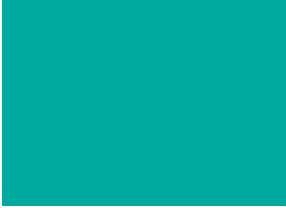
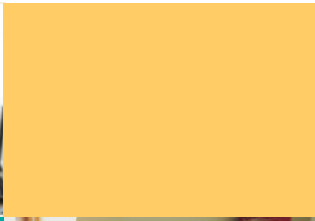
Reception and Nursery Places

The offers for Reception will be going out at the end of March/beginning of April. Offers for Nursery places will be going out in April/May. Parents will receive notification via e-mail if they applied on-line. **All** parents will receive confirmation of nursery and reception places via letter.

Appealing for places.

The Policy for admissions of nursery places does not allow for appeals, as it is not compulsory. Therefore if you do not get your desired nursery place, you may have to look at other options. It may be an alternative to consider Private provision.

If you are unsuccessful in gaining a place at the school you wanted for a reception place, there are limited grounds for appeal. Legislation requires all schools to have a limit of 30 places in infant classes (where the majority of children are 5,6 or 7). A school must not exceed this. There are exceptions to this rule which are complex. If you require more information about this please contact the service.



Interested in Training to become an Independent Parental Supporter?

Parent Partnership have places available to train as an IPS. The course runs from 11th May– 27th July, 2 hours a week.

Please Call Emma on 01782 234701 for more details!

Tips for Parents

Ensure visits to your child's High School occur before your child starts in September.

Make sure you have the uniform ready! Look out for offers through the Summer holidays, which can make it cheaper!

Keep a positive focus. It is important that high School is talked about in a positive way, to reduce any anxieties your child has.

Get enough ZZZZZzzzz's! Make sure your child gets in a good sleep routine before September

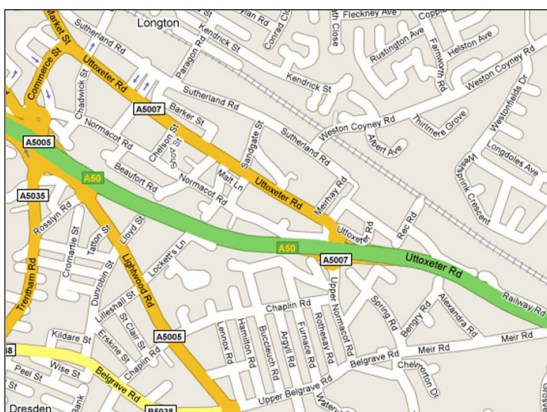
Make a trial run to school, to make sure they are safe to travel. Highlight any dangers on the way.

Take homework seriously! It is important that your child has a quiet place to do their homework.

Be prepared for some insecurities. Your child will be very nervous at first. Allow time for them to settle.

Check out the pastoral care at the school. They can support your child if they experience problems.

How to find The Choice Advisory Service



From Stoke: Follow the A50 until the Normacot turning. Take the third exit off the mini roundabout. Go across the bridge and then straight across the next mini roundabout. Take the first turning on the right into Normacot Road. Turn left into Furnace Road and you will see Queensberry Community Education Centre directly facing you. The Choice Advisory Office is in the building on the left.